

ESPintelligent

ANALOGUE ADDRESSABLE FIRE DETECTION

Hochiki's comprehensive ESP Intelligent (Analogue Addressable) range is suitable for even the most demanding applications and incorporates high performance sensors, a wide selection of input and output modules and ancillaries. All products use Hochiki's high integrity communications link 'ESP' (Enhanced Systems Protocol) that's at the heart of the ESP range.



ALG-EN

A **Photoelectric Smoke Sensor** incorporating Hochiki's unique High Performance Chamber which allows the sensor threshold level to be increased, thereby improving the signal to noise ratio and reducing susceptibility to false alarms.

- ▶ Removable, High Performance chamber
- ▶ Twin fire LEDs allow 360° viewing
- ▶ Locking mechanism (sensor to base)
- ▶ Variable sensitivity
- ▶ Electronically addressed
- ▶ Pulsing/non-pulsing controlled from panel*
- ▶ Approved by LPCB & VdS



ACA-E

A **Multi-Sensor** incorporating a thermal element and a High Performance photoelectric smoke chamber. Has three modes controlled from the Control Panel, allowing either the optical or thermal element or both to be active in making the fire decision.

- ▶ User selectable modes
- ▶ Incorporates Optical & Heat elements
- ▶ Removable, High Performance Chamber
- ▶ Twin fire LEDs allow 360° viewing
- ▶ Pulsing/non-pulsing controlled from panel*
- ▶ Variable sensitivity
- ▶ Electronically addressed
- ▶ Approved by LPCB & VdS



ACB-E

A **Multi-Heat Sensor** incorporating a variable Fixed Temperature heat element and a Rate Of Rise heat element, both controlled from the Control Panel allowing either thermal element or both elements simultaneously to be active in making the fire decision.

- ▶ User selectable modes
- ▶ Incorporates Fixed Temperature and Rate Of Rise Heat elements
- ▶ Twin fire LEDs allow 360° viewing
- ▶ Pulsing/non-pulsing controlled from panel*
- ▶ Electronically addressed
- ▶ LPCB & VdS approved to Classes A, B & C



ACB-EW

An **IP67 Rated Waterproof Multi-Heat Sensor** which can be used externally and is supplied with its own fixing base which is used to fix the sensor. Flying leads from the sensor connect directly to the loop via waterproof connectors.

- ▶ User selectable modes
- ▶ Incorporates Fixed Temperature and Rate Of Rise Heat elements
- ▶ Twin fire LEDs allow 360° viewing
- ▶ Pulsing/non-pulsing controlled from panel*
- ▶ Electronically addressed
- ▶ IP67 rated
- ▶ Supplied with fixing base
- ▶ LPCB & VdS approved to Classes A, B & C



esp FIREbeam

An Analogue Addressable Reflective Beam Smoke Detector

designed to protect large open spaces features separate detector and controller. The detector unit incorporates a motorised head that can align itself during commissioning. Additional reflector kits enhance detection range.

- ▶ Continually corrects itself against building movement
- ▶ Controlled and adjusted from ground level utilising included controller
- ▶ 5 - 40 m standard detection range
- ▶ Extensions kits available to enhance detection range up to 100 m
- ▶ Fully compatible with the Hochiki ESP analogue addressable protocol
- ▶ Approved by VdS



TCH-B100

A Hand Held Address Programmer

designed to address the ESP range of Sensors and other addressable devices such as the YBO-BS Base Sounder.

Designed to be light, robust and easy to use it operates from a single PP3 size battery which can provide up to 8000 operations.

(shown with sensor fitted - not supplied)

- ▶ Lightweight design
- ▶ Quick and reliable addressing
- ▶ Up to 8000 address settings from one battery
- ▶ Displays sensor analogue value



YBN-R/3

A Common Mounting Base

which is fully compatible with Hochiki's ESP range of sensors. Supplied with square cable clamps for secure and reliable cable termination and is also capable of driving a remote LED if required.

(Red version - YBO-R/3(RED) for use with CHO-WS2 Wall Sounder & CHO-WSB Wall Sounder Beacon)



- ▶ Electronics free
- ▶ Stainless steel contacts
- ▶ Takes 2.5 mm² cables
- ▶ Slim profile - only 8 mm
- ▶ Rugged wiring contacts
- ▶ Facility for remote indicator
- ▶ Quick Connection via square cable clamps
- ▶ Available in RED for use with CHO-WS2 Wall Sounder & CHO-WSB Wall Sounder Beacon



YBO-R/SCI

A Loop Isolator Base

which is fully compatible with Hochiki's ESP Range of Sensors, Beacons, Sounders and Indicators. The unit incorporates an amber LED to show when it is isolating a section of the loop.

(Red version - YBO-R/SCI(RED) for use with CHO-WS2 Wall Sounder & CHO-WSB Wall Sounder Beacon)



- ▶ Detects short circuits on loop
- ▶ Status LED
- ▶ Connection of up to 127 per loop
- ▶ Supports ESP devices
- ▶ Quick connection via square cable clamps
- ▶ Available as a DIN Rail Module
- ▶ Available in RED for use with CHO-WS2 Wall Sounder & CHO-WSB Wall Sounder Beacon
- ▶ Approved by LPCB & VdS



CHO-WS2

An Addressable Loop-Powered Wall Sounder

providing 8 volume levels and 51 tones with a maximum output of up to 102 dB(A) (±2 dB(A)) with low current consumption. Special bases available: YBO-R/3(RED), YBO-R/SCI(RED), YBO-R/3(WHT) and YBO-R/SCI(WHT-SNDR).

- ▶ Loop Powered
- ▶ Single Loop Address - addressed via the TCH-B100 Hand Held Programmer
- ▶ Variable Sound Output 90 - 102 dB(A) (±2 dB(A)) output at 1 metre
- ▶ Weatherproof Kit available (see below)
- ▶ 51 User-Selectable Tones (all tones EN54-3 compatible)
- ▶ Auto-shutdown Mode available*
- ▶ Approved by LPCB and VdS



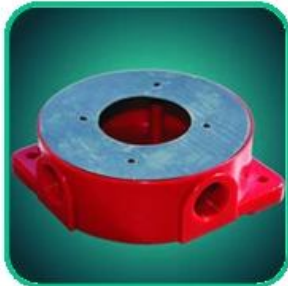
CHQ-WSB



An Addressable Loop-Powered Wall Sounder Beacon as per the CHQ-WS2 but additionally featuring an integral beacon within the horn which utilises high intensity LED technology. Special bases available: YBO-R/3(RED), YBO-R/SCI(RED), YBO-R/3(WHT) and YBO-R/SCI(WHT-SNDR).

As per CHQ-WS2 plus:

- ▶ Variable flash frequency*
- ▶ High Intensity LED technology
- ▶ Independent control of Sounder and Beacon*
- ▶ Auto-shutdown Mode available - can be set independently for sounder or beacon*



WS2-WPK



A Weatherproof Back Box and gasket set for the CHQ-WS2 Wall Sounder and CHQ-WSB Wall Sounder Beacon, increases the IP Rating of the Sounder to IP65 for external use.

- ▶ Designed for CHQ-WS2 and CHQ-WSB
- ▶ Increases sounder IP Rating from IP21 to IP65 (external use)
- ▶ Easy to install



YBO-BS



An Addressable Loop-Powered Base Sounder providing 13 volume levels and 51 tones with a maximum output of up to 98 dB(A) (± 2 dB(A)) with low current consumption. The unit is designed to fit either the YBN-R/3 or the YBO-R/SCI* Bases.

(*From batch number 6044)

- ▶ Loop Powered
- ▶ Single Loop Address - addressed automatically by Control Panel or via the TCH-B100 Hand Held Programmer
- ▶ 50 ~ 98 dB(A) (± 2 dB(A)) output at 1m
- ▶ Fits Hochiki Standard or Isolator Base and supports ESP Sensors, Beacons and Remote Indicator
- ▶ 51 User-Selectable Tones (all tones EN54-3 compatible)
- ▶ Approved by LPCB & VdS



YBO-BSB



An Addressable Loop-Powered Base Sounder Beacon, providing 13 volume levels and 51 tones with a maximum output of up to 98 dB(A) (± 2 dB(A)) with low current consumption. The unit is designed to fit either the YBN-R/3 or the YBO-R/SCI* Bases.

(*From batch number 6044)

- ▶ Loop Powered
- ▶ Single Loop Address, addressed by either Control Panel or TCH-B100
- ▶ 50 ~ 98 dB(A) (± 2 dB(A)) output at 1m
- ▶ Fits Hochiki Standard or Isolator Base and supports ESP Sensors, Beacons and Remote Indicator
- ▶ 51 User-Selectable Tones (all tones EN54-3 compatible)
- ▶ Beacon and Sounder can be controlled independently*
- ▶ Approved by LPCB & VdS



CHQ-AB



An Addressable Loop-Powered Beacon, with high-intensity LEDs and a Fresnel lens design which produces a highly visible flash. The casing exactly matches the Hochiki ESP Sensor range in shape and colour providing seamless integration.

- ▶ High Intensity LED technology
- ▶ 1 Hz flash frequency
- ▶ Addressable via TCH-B100
- ▶ Up to 127 devices per loop
- ▶ Choice of 3 lens colours (red, amber and blue)
- ▶ Approved by VdS (red and amber lens)

* Please ensure control panel compatibility



CHQ-ARI

An Addressable Loop-Powered Remote Indicator, with high-

intensity LEDs and a Fresnel lens design which produces a highly visible signal. The casing exactly matches the Hochiki ESP Sensor range in shape and colour providing seamless integration.

- ▶ High Intensity LED technology
- ▶ Addressable via TCH-B100
- ▶ Up to 127 devices per loop
- ▶ Approved by VdS



CHQ-POM

A Powered Output Module

designed to supply a nominal 24 Vdc at various, user-selectable current levels from 2 to 32 mA (in increments of 2 mA). The unit is small enough to be added to other third-party devices thereby allowing a range of equipment to be added to the ESP loop. The unit also features two monitored inputs.

- ▶ Supplies a nominal 24 Vdc at various current levels, 2 mA to 32 mA in increments of 2 mA
- ▶ User-selectable current output
- ▶ Includes two monitored inputs
- ▶ Small design, provides simple connectivity to ESP loop for third-party devices, such as IFD-E (see page 18)
- ▶ Colour-coded flying leads for simple installation
- ▶ Addressed with TCH-B100 Hand Held Programmer
- ▶ Approved by LPCB & VdS



CHQ-SIM

A Single Input Module designed to allow a single monitored input to be connected to the ESP loop. This provides a compact, low-cost option where the installation of the larger CHQ 'Smart-Fix' Range of Modules might be difficult.

- ▶ Includes a single monitored input
- ▶ Small design for simple provision of a monitored input onto an ESP loop
- ▶ Flying leads for easy installation
- ▶ Addressed with TCH-B100 Hand Held Programmer
- ▶ Approved by LPCB & VdS



Lid Colours



Transparent Black



Opal

CHQ-DIM(SCI)

A Dual Input Module designed to interface to a variety of inputs such as door contacts, sprinkler flow/door switches and plant equipment. Also available as a DIN Rail mountable version. Both models feature an integral short-circuit isolator.

- ▶ Loop powered
- ▶ Single loop address
- ▶ Two independent inputs for monitoring of volt-free contacts
- ▶ Each input can be configured to monitor either Normally Open or Normally Closed contacts
- ▶ DIN rail version available
- ▶ Both models feature an integral short-circuit isolator
- ▶ Both models approved by LPCB & VdS



Lid Colours



Transparent Black



Opal White

CHQ-DRC(SCI)

A Dual Relay Controller designed to provide two general-purpose relay outputs, each output can be controlled independently and used to control dampers, plant and equipment shutdown. The monitored input can be used for local power supply fault monitoring or as a general-purpose input. Also available as a DIN Rail mountable version. Both models feature an integral short-circuit isolator.

- ▶ Loop powered
- ▶ Single loop address
- ▶ Two independently controlled changeover relays
- ▶ Relays contact rated at 30 Vdc at 1 A
- ▶ Auxiliary monitored input
- ▶ DIN rail version available
- ▶ Both models feature an integral short-circuit isolator
- ▶ Both models approved by LPCB & VdS



CHQ-DSC(SCI)

A Dual Sounder Controller, which has been designed to provide two sounder outputs (that can be driven separately) with full fault monitoring. The monitored input can be used for local power supply fault monitoring or as a general-purpose input. Also available as a DIN Rail mountable version. Both models feature an integral short-circuit isolator.

- ▶ Single loop address
- ▶ Two independent sounder circuits
- ▶ Each circuit fully monitored for Open and Short Circuit faults
- ▶ Each alarm circuit fused at 1 A
- ▶ Auxiliary monitored Input
- ▶ Outputs are synchronised and can be driven continuously or intermittently
- ▶ 24 Vdc auxiliary power required
- ▶ DIN rail version available
- ▶ Both models feature an integral short-circuit isolator
- ▶ Both models approved by LPCB & VdS



CHQ-DZM(SCI)

A Dual Zone Module designed to allow up to 60 conventional detectors (30 per zone) or up to 6 SPC-ET or SRA-ETs (3 per zone) to be interfaced to Hochiki's ESP analogue addressable system. The unit also features Schottky and Zener line continuity options. Also available as a DIN Rail mountable version. Both models feature an integral short-circuit isolator.

- ▶ Single loop address
- ▶ Supports two independent zones of conventional detectors
- ▶ Both zones fully monitored for Short/Open Circuit
- ▶ Requires an auxiliary 24 Vdc supply
- ▶ DIN rail version available
- ▶ Both models feature an integral short-circuit isolator
- ▶ Both models approved by LPCB



CHQ-DZM(SCI)-IS

A Dual Zone Module which is fully compatible with Hochiki's ESP analogue addressable protocol and I.S. equipment. The module will allow connection of up to 40 Hochiki I.S. conventional detectors (20 per zone) through a Galvanic isolator or Zener barrier, which are then fully monitored for open and short circuit. Also available as a DIN Rail mountable version. Both models feature an integral short-circuit isolator.

- ▶ Single loop address
- ▶ Supports two independent zones of Hochiki I.S. Conventional Detectors
- ▶ Both zones fully monitored for short/open-circuit
- ▶ Requires an auxiliary 24 Vdc supply
- ▶ DIN rail version available
- ▶ Both models feature an integral short-circuit isolator
- ▶ Both models approved by LPCB



CHQ-MRC(SCI)

A Mains Relay Controller providing a single mains rated relay output for the control of such devices as dampers, extractors or plant and equipment shutdown. The monitored input can be used for local power supply fault monitoring or as a general-purpose input. Also available as a DIN Rail mountable version. Both models feature an integral short-circuit isolator.

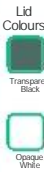
- ▶ Loop-powered
- ▶ Single loop address
- ▶ Single mains rated relay contact
- ▶ Relay contact rated at 250 Vac @ 5 A (resistive) & 48 Vdc @ 2 A (resistive)
- ▶ Auxiliary monitored input
- ▶ DIN rail version available
- ▶ Both models feature an integral short-circuit isolator



CHQ-PCM(SCI)

A Plant Control Module with four independent change-over relay outputs, with N/O and N/C volt free contacts and four inputs. These outputs can be driven separately by the fire alarm control panel and can be used for the control of devices such as dampers or for plant and equipment shutdown. Also available as a DIN Rail mountable version. Both models feature an integral short-circuit isolator.

- ▶ Single loop address
- ▶ Loop powered
- ▶ 4 change-over relay outputs
- ▶ 4 independent inputs for monitoring of volt-free contacts
- ▶ Each input can be configured to monitor either Normally Open or Normally Closed contacts
- ▶ DIN Rail version available
- ▶ Both models feature an integral short-circuit isolator
- ▶ Both models approved by LPCB



HQ-SZM(SCI)

A Single Zone Monitor designed to allow up to 6 conventional detectors or 1 SPC-ET/SRA-ET beam detectors to be interfaced to Hochiki's ESP analogue addressable system. Also available as a DIN Rail mountable version. Both models feature an integral short-circuit isolator.

- ▶ Loop powered
- ▶ Up to 6 Conventional Detectors
- ▶ Single loop address
- ▶ Remote LED output
- ▶ Fully monitored for Short and Open Circuit faults
- ▶ DIN rail version available
- ▶ Both models feature an integral short-circuit isolator
- ▶ Both models approved by LPCB & VdS



HCP-E

A Manual Call Point fully compatible with Hochiki's ESP analogue addressable protocol and featuring plug-in wiring terminals for easy installation.

Note - requires SR MOUNTING BOX if surface mounted (sold separately)

- ▶ Fast response
- ▶ Status LED
- ▶ Non-frangible element fitted as standard (conforms to EN54)
- ▶ Addressed with TCH-B100 Hand Held Programmer
- ▶ Surface or flush mounting
- ▶ LPCB Approved to EN54



HCP-W

An IP67 Weatherproof Manual Call Point, fully compatible with Hochiki's ESP analogue addressable protocol. Featuring plug-in wiring terminals for easy installation.

- ▶ Fast response
- ▶ Status LED
- ▶ Non-frangible element fitted as standard (conforms to EN54)
- ▶ Addressed with TCH-B100 Hand Held Programmer
- ▶ Surface mounting
- ▶ LPCB approved to EN54
- ▶ IP67 rated



HCP-E(SCI)

A Manual Call Point Isolator fully compatible with Hochiki's ESP analogue addressable protocol and featuring an integral short-circuit isolator (SCI). Features a bi-coloured LED to indicate either fire (red) or short-circuit (amber). Also features plug-in wiring terminals for easy installation.

Note - requires SR MOUNTING BOX if surface mounted (sold separately)

- ▶ Fast response
- ▶ Integral short-circuit isolator
- ▶ Bi-colour status LED
- ▶ Non-frangible element fitted as standard (conforms to EN54)
- ▶ Addressed with TCH-B100 Hand Held Programmer
- ▶ Surface or flush mounting
- ▶ LPCB Approved to EN54



HCP-W(SCI)

An IP67 Weatherproof Manual Call Point Isolator fully compatible with Hochiki's ESP analogue addressable protocol and featuring an integral short-circuit isolator (SCI). Features a bi-coloured LED to indicate either fire (red) or short-circuit (amber). Also features plug-in wiring terminals for easy installation.

- ▶ Fast response
- ▶ Integral short-circuit isolator
- ▶ Bi-colour status LED
- ▶ Non-frangible element fitted as standard (conforms to EN54)
- ▶ Addressed with TCH-B100 Hand Held Programmer
- ▶ Surface mounting
- ▶ LPCB Approved to EN54
- ▶ IP67 rated

CDXconventional

CONVENTIONAL FIRE DETECTION

Hochiki's CDX range offers one of the most extensive product portfolios available, providing solutions for most conventional fire detection applications as well as security systems, due to its wide operating voltage range (9.5–30 Vdc).



SLR-E3N

A Conventional Photoelectric Smoke Detector, which is fully compatible with the majority of existing Conventional systems. A third terminal provides an integral remote indicator output.

- ▶ Removable, High Performance chamber
- ▶ Remote Indicator output
- ▶ Wide voltage range (9.5 – 30 Vdc)
- ▶ Low profile design with one piece outer cover
- ▶ Twin fire LEDs allow 360° viewing
- ▶ Range of mounting bases
- ▶ Approved by LPCB & VdS



DCD-AE3

A Conventional Rate of Rise Heat Detector incorporating a 60°C fixed temperature element. The thermistor and linearising circuit provide an accurate linear response Heat Detector. A third terminal provides integral remote indicator output.

- ▶ Electronic linear heat detection
- ▶ Remote Indicator output
- ▶ Wide voltage range (9.5 – 30 Vdc)
- ▶ Twin fire LEDs allow 360° viewing
- ▶ Range of mounting bases
- ▶ Approved by LPCB & VdS



DCD-CE3

A Conventional Rate of Rise Heat Detector incorporating a 90°C fixed temperature element. The thermistor and linearising circuit provide an accurate linear response Heat Detector. A third terminal provides integral remote indicator output.

- ▶ Electronic linear heat detection
- ▶ Remote Indicator output
- ▶ Wide voltage range (9.5 – 30 Vdc)
- ▶ Twin fire LEDs allow 360° viewing
- ▶ Full range of mounting bases
- ▶ Approved by LPCB & VdS



DFJ-AE3

A Conventional 60°C Fixed Temperature Heat Detector using a thermistor and linearising circuit to provide an accurate linear response Heat Detector. A third terminal provides integral remote indicator output.

- ▶ Electronic linear heat detection
- ▶ Remote Indicator output
- ▶ Wide voltage range (9.5 – 30 Vdc)
- ▶ Twin fire LEDs allow 360° viewing
- ▶ Fixed Temperature Detector
- ▶ Full range of mounting bases
- ▶ Approved by LPCB & VdS



DFJ-CE3

A Conventional 90°C Fixed Temperature Heat Detector using a thermistor and linearising circuit to provide an accurate linear response. A third terminal provides integral remote indicator output.

- ▶ Electronic linear heat detection
- ▶ Remote Indicator output
- ▶ Wide voltage range - can be installed on security systems
- ▶ Twin fire LEDs allow 360° viewing
- ▶ Fixed Temperature Detector
- ▶ Full range of mounting bases
- ▶ Approved by LPCB & VdS



DFG-60E

An IP67 Waterproof Conventional 60°C Fixed Temperature Heat Detector with minimal standby current and high reliability. Particularly suited to environments, which are exposed to high levels of condensation or are hosed down.

- ▶ Waterproof design - rated to IP67
- ▶ Low profile shape
- ▶ Utilises a bi-metallic strip to sense temperature change
- ▶ No Mounting base required
- ▶ Minimal standby current
- ▶ Approved by LPCB & VdS



DRD-E

A Conventional Flame Detector designed for internal use to detect large flames. The detector fits any of the CDX range of mounting bases. The detection zone is a 90° cone and the detection range is up to and including 25m.

- ▶ Class 1 performance as defined in BS EN54-10:2002 (range up to 25 m)
- ▶ Single IR technology
- ▶ Robust and slim design
- ▶ Low current consumption
- ▶ Easy to install
- ▶ Fits any of the CDX Range of mounting bases
- ▶ Twin LEDs for 360° view
- ▶ Approved by LPCB & VdS



IFD-E

A Conventional IR² Infra-Red Flame Detector designed to respond to low-frequency (1 to 15 Hz) flickering IR radiation emitted from flames during combustion, the unit can discriminate between flames and spurious sources of radiation such as sunlight. An I.S. version and an explosion-proof version are also available (page 24).

- ▶ Class 1 sensitivity to EN54-10 detects 0.1 m² fire @ 25 m
- ▶ Excellent optical interference immunity (solar blind)
- ▶ Selectable output options - conventional 2-wire, 4-20 mA, latching or non-latching relay contacts, fire/fault, pre-alarm
- ▶ Selectable response speed
- ▶ Optical self-test
- ▶ Low power consumption
- ▶ Approved by LPCB



16091

A Hand Held Flame Detector Tester providing a flame-free method of UV testing the industrial IR² series of flame detectors: IFD-E, IFD-E(IS) and the IFD-E(Exd).

- ▶ Flame-free UV testing, ideal for hazardous areas
- ▶ Simple to use hand held unit with rechargeable NiCd battery pack and charger
- ▶ Tests many Flame Sensors Types UV, UV/IR, UV/IR², IR³, IR², IR
- ▶ Range typically 3 metres and beyond
- ▶ Selectable optical output intensity with LED bar graph indication

THIS EQUIPMENT IS ALSO AVAILABLE FOR HIRE. Please contact your Sales Representative for further information.



SPC-ET

A Conventional Beam Smoke

Detector that consists of an emitter and receiver that cover a distance of 5 - 100 m providing a maximum coverage of 1500 m². Features an automatic signal strength adjustment facility and is also available with a latching or a non-latching relay.

- ▶ 5 - 100 m range
- ▶ Automatic compensation
- ▶ Automatic signal strength adjustment
- ▶ Emitter unit can be powered direct from zone (or loop)
- ▶ Features a Latching or Non-Latching Fault Relay
- ▶ Can be interfaced onto ESP system via CHO-DZM(SCI) (page 8) or CHO-SZM(SCI) (page 9)
- ▶ Approved by LPCB & VdS



SRA-ET

A Conventional Reflective Beam Smoke

Detector consisting of an emitter/receiver unit and reflector plate that works over a distance of 5 - 30 m, providing a maximum coverage of 450 m².

- ▶ 5 - 30 m range
- ▶ Small flat reflector
- ▶ Powered directly from the zone
- ▶ Full line continuity options
- ▶ Automatic compensation
- ▶ Can be interfaced onto ESP system via CHO-DZM(SCI) (page 8) or CHO-SZM(SCI) (page 9)
- ▶ Approved by LPCB & VdS

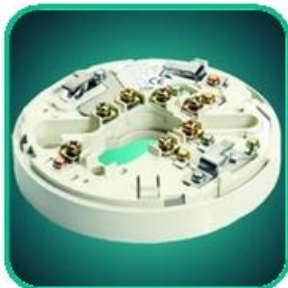


YBN-R/6

A Conventional Detector

Mounting Base associated with the CDX Range of Detectors and Beacons and is fully compatible with the majority of existing conventional fire alarm control panels.

- ▶ Integral remote indicator output
- ▶ Low Profile, only 8 mm
- ▶ Rugged design and electronics free
- ▶ Quick connections via square cable clamps
- ▶ Accepts up to 2.5 mm² cables
- ▶ Bayonet slot, low insertion force for detectors



YBO-R/6PA

A Conventional Detector

Mounting Base for 2-Wire systems where detectors and sounders are on same zone cables*.

- ▶ Integral remote indicator output
- ▶ Rugged design
- ▶ Dedicated cable screen terminal
- ▶ Quick connection via square cable clamps
- ▶ Accepts up to 2.5 mm² cables
- ▶ Bayonet slot, low insertion force for detectors
- ▶ Approved by LPCB



YBO-R/6R

A Conventional Latching Relay

Detector Mounting Base associated with the CDX Range of Detectors and is fully compatible with the majority of existing conventional fire alarm and security control panels.

- ▶ Integral remote indicator output
- ▶ Wide voltage range - can be used in security systems
- ▶ Rugged design
- ▶ Quick connections via square cable clamps
- ▶ Accepts up to 2.5 mm² cables
- ▶ Bayonet slot, low insertion force for detectors
- ▶ Approved by LPCB

* Please ensure control panel compatibility



YBO-R/6RN

A Conventional Non-Latching Relay Detector Mounting Base

associated with the CDX Range of Detectors and is fully compatible with the majority of existing conventional fire alarm and security control panels.

- ▶ Integral remote indicator output
- ▶ Wide voltage range - can be used in security systems
- ▶ Rugged design
- ▶ Quick connections via square cable clamps
- ▶ Accepts up to 2.5 mm² cables
- ▶ Bayonet slot, low insertion force for detectors
- ▶ Approved by LPCB



YBO-R/6RS

A Conventional Latching Schottky Diode Relay Detector Mounting Base

associated with the CDX Range of Detectors and is fully compatible with the majority of existing conventional fire alarm control panels.

- ▶ Integral remote indicator output
- ▶ In-line Schottky Diode for Line Continuity
- ▶ Rugged design
- ▶ Quick connections via square cable clamps
- ▶ Accepts up to 2.5 mm² cables
- ▶ Bayonet slot, low insertion force for detectors
- ▶ Approved by LPCB



YBN-R/6SK

A Conventional Detector Mounting Base with in-line Schottky Diode

associated with the CDX Range of Detectors and is fully compatible with the majority of existing conventional fire alarm control panels.

- ▶ Integral remote indicator output
- ▶ In-line Schottky Diode for line continuity
- ▶ Low profile, only 8 mm
- ▶ Rugged design
- ▶ Quick connections via square cable clamps
- ▶ Accepts 2.5 mm² cables
- ▶ Bayonet slot, low insertion force for detectors



CSB-E

A Conventional Base Sounder

which has been designed to complement the CDX range of detectors. Improved electronic design enables very low current consumption whilst providing a range of tones and volumes selectable from each unit.

- ▶ Robust design
- ▶ Low current consumption
- ▶ Easy to install
- ▶ Maximum 93 dB(A) @ 1 m (Tone 1)
- ▶ 32 user-selectable tones and 3 user-selectable volumes
- ▶ Lockable cap available (CS/CAP)



CSBB-E

A Conventional Base Sounder Beacon

which has been designed to complement the CDX range of detectors. Improved electronic design enables very low current consumption whilst providing a range of tones and volumes selectable from each unit. Features integral beacon.

- ▶ Robust design
- ▶ Low current consumption
- ▶ Easy to install
- ▶ Maximum 93 dB(A) @ 1 m (Tone 1)
- ▶ 32 user-selectable tones and 3 user-selectable volumes
- ▶ Utilises high intensity LEDs
- ▶ Lockable cap available (CS/CAP)